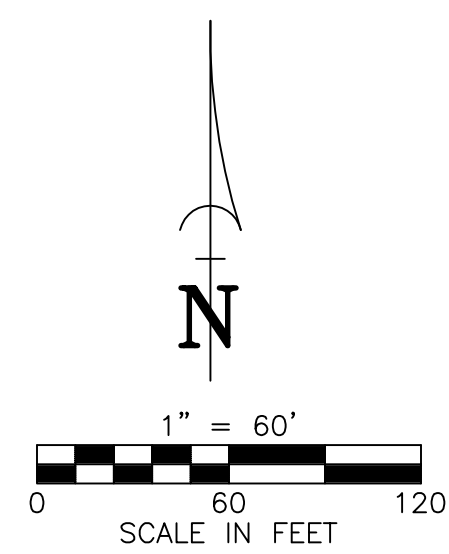
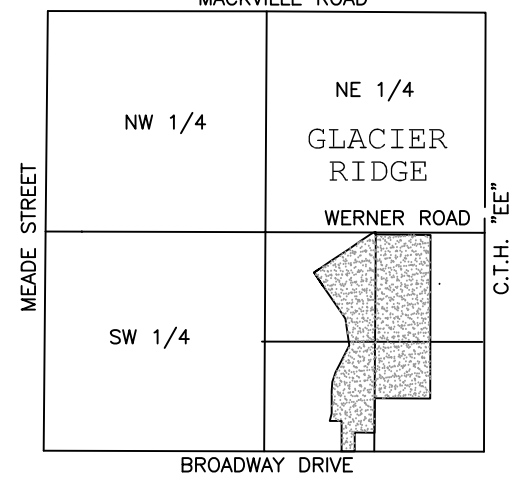


GLACIER RIDGE (PHASE 1): FINAL DRAINAGE PLAN (MIDDLE)



LOCATION MAP
SECTION 36
T 22 N, R 17 E
CITY OF APPLETON
OUTAGAMIE COUNTY, WISCONSIN



BENCHMARKS

BM-8
604 SPIKE IN TWIN 14" COTTONWOODS AT WEST END WERNER ROAD SOUTH R/W NE FACE ELEV = 838.90'

BM-9
604 SPIKE SET IN 30" BOXELDER TREELINE NORTH TO SOUTH AT DITCHLINE, 100' S OF WERNER ROAD 800'± W OF BALLARD ROAD, NW FACE ELEV = 836.60'

BM-10
RAILROAD SPIKE IN SW FACE OF SHORT TELEPHONE POLE SW CORNER SW CORNER OF BALLARD AND WERNER ROAD ELEV = 875.71'

BM-12
HYDRANT WEST SIDE OF BALLARD, 90'± NORTH OF WERNER ROAD ELEV = 877.77'

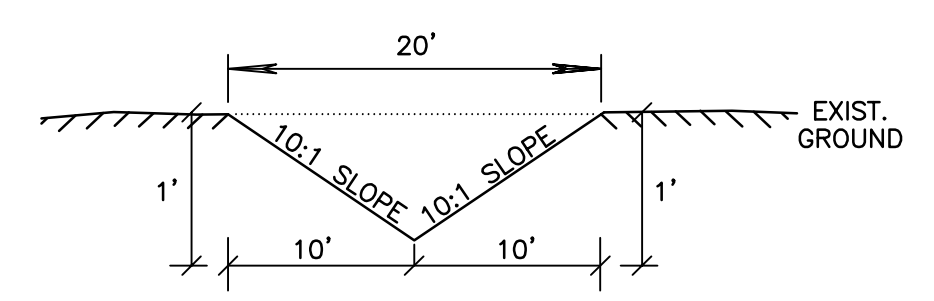
BM-13
HYDRANT EAST SIDE OF BALLARD @ WERNER ROAD ELEV = 874.26'

Maintenance of Drainage Easements

Lots 4,5,10,11,19,20,54,55 and 64 contain storm sewer/drainage easements. The storm sewer/drainage easements are conveyance paths for storm water. Lot owners shall not place structures of any type within the easement. The placement of fill in a drainage easement, which interferes with the flow or any changes to the shape of the drainage easement by the lot owner or his agent, is prohibited.

Upon failure of Lot owner's to maintain said drainage ways and easements as designed; the City of Appleton retains the right to perform maintenance, repairs, and assess costs to property owners.

- 100 YEAR FLOW PATHS**
- ⑨ LOTS 2/3/63/64 100 YR EVENT = 6.22 CES
 - ⑩ LOTS 9/10 100 YR EVENT = 11.31 CES
 - ⑮ LOTS 19/20/52/53 100 YR EVENT = N/A CES



SWALE DETAIL
N.T.S.

CHARACTERISTICS:
10:1 SIDE SLOPES (GRASS)
n = 0.03
Q = 31 C.F.S. (CAPACITY)

TOPOGRAPHIC LEGEND

<ul style="list-style-type: none"> 1" x 18" IRON PIPE SET 1-1/4" x 30" REBAR SET CHESELED "X" SET 3/4" REBAR FOUND 1" IRON PIPE FOUND 1-1/4" REBAR FOUND 2" IRON PIPE FOUND CHESELED "X" FOUND GOVERNMENT CORNER RECORDED AS CONFERRIOUS TREE DECIDUOUS TREE EXIST. WOODS LINE WETLANDS SOIL BORING 	<ul style="list-style-type: none"> OVERHEAD POWER LINES UNDERGROUND ELECTRIC UNDERGROUND TELEPHONE FIBER- UNDERGROUND FIBEROPTIC CABLE UNDERGROUND GAS UNDERGROUND CABLE TV EXIST. FENCE LINE SIGN POWER POLE GUY LIGHT POLE TELEPHONE PEDESTAL ELECTRIC PEDESTAL CABLE PEDESTAL EXIST. HYDRANT WATER VALVE WATER STOP BOX 	<ul style="list-style-type: none"> GAS VALVE EXIST. STORM MANHOLE STORM INLET YARD DRAIN EXIST. SANITARY MANHOLE EXIST. SAN. SEWER EXIST. STD. SEWER EXIST. WATER MAIN EXIST. SPOT ELEVATION CONTOUR W/ ELEVATION 800.000: EXIST. TOP OF CURB ELEV. 800.000: EXIST. FLOW LINE ELEV. FT = 800.00: FIRST FLOOR = 800.00 TOPSOIL DEPTH INfiltration SOIL BORING
--	---	---

FINAL DRAINAGE PLAN (MIDDLE)

GLACIER RIDGE (PHASE 1)
LOTS 1-64

SCALE	DATE
1"=60"	12-11-07
COMPUTER FILE	
663001/Design/663001de.dwg	

DRAWING NO.
663-001 D.P. (MID)

Martenson & Eisele, Inc.
1377 Midway Road
Menasha, WI 54952
www.martenson-eisele.com
info@martenson-eisele.com
920.731.0381 1.800.236.0381

Planning
Environmental
Surveying
Engineering
Architecture

NO.	DATE	DRAWN BY	CHECKED	APPROVED	REVISION	
					DATE	BY
1	01-11-08					Re-Sized & Re-Graded Lots 39-45
2	05-08-08					Lots 47-51: Revised Lot Line Grades